

## Appendix N      Spatial Analysis Drawings & Figures

Congleton Link Road - breakdown of support for parishes within the CW12 boundary

- 1) A total of 1083 (84.7% of the total response) submitted from within the CW12 boundary.
- 2) 'Other' denotes instances where respondents have selected 'Don't Know', 'No Preference' or failed to provide a response.
- 3) 'Breakdown of support/opposition for Route Options...' considers only the respondents who were in favour of the scheme.
- 4) % support and % opposition represent how the number of total responses received for an option are distributed in terms of support and opposition.

General Results

Brereton - 16 respondents		
Option	Respondents	Respondent %
Support the scheme	11/16	68.8%
➤ In favour of only one option	5/16	31.3%
➤ In favour of two options	4/16	25.0%
➤ In favour of three options	0/16	0.0%
➤ In favour of all options	2/16	12.5%
Against the scheme	3/16	18.8%
Other	2/16	12.5%
Total	16/16	100.0%

11/16 (68.8%)  
respondents support the  
scheme

Congleton - 786 respondents		
Option	Respondents	Respondent %
Support the scheme	672/786	85.5%
➤ In favour of only one option	370/786	47.1%
➤ In favour of two options	207/786	26.3%
➤ In favour of three options	9/786	1.1%
➤ In favour of all options	86/786	10.9%
Against the scheme	85/786	10.8%
Other	29/786	3.7%
Total	786/786	100.0%

672/786 (85.5%)  
respondents support the  
scheme

Eaton - 118 respondents		
Option	Respondents	Respondent %
Support the scheme	59/118	50.0%
➤ In favour of only one option	22/118	18.6%
➤ In favour of two options	35/118	29.7%
➤ In favour of three options	0/118	0.0%
➤ In favour of all options	2/118	1.7%
Against the scheme	47/118	39.8%
Other	12/118	10.2%
Total	118/118	100.0%

59/118 (50.0%)  
respondents support the  
scheme

Hulme Walfield - 57 respondents		
Option	Respondents	Respondent %
Support the scheme	37/57	64.9%
➤ In favour of only one option	15/57	26.3%
➤ In favour of two options	16/57	28.1%
➤ In favour of three options	0/57	0.0%
➤ In favour of all options	6/57	10.5%
Against the scheme	18/57	31.6%
Other	2/57	3.5%
Total	57/57	100.0%

37/57 (64.9%)  
respondents support the  
scheme

Breakdown of support / opposition for Route Options

Brereton - 11/16 respondents support the scheme			
Maximum number of 11 responses per route option			
Option	Responses	Support %	Oppose %
Purple Option	9	55.6%	44.4%
Red Option	10	80.0%	20.0%
Blue Option	8	50.0%	50.0%
Green Option	7	57.1%	42.9%

Congleton - 672/786 respondents support the scheme			
Maximum number of 672 responses per route option			
Option	Responses	Support %	Oppose %
Purple Option	585	82.2%	17.8%
Red Option	372	55.1%	44.9%
Blue Option	386	69.4%	30.6%
Green Option	352	57.1%	42.9%

Eaton - 59/118 respondents support the scheme			
Maximum number of 59 responses per route option			
Option	Responses	Support %	Oppose %
Purple Option	46	58.7%	41.3%
Red Option	59	81.4%	18.6%
Blue Option	50	24.0%	76.0%
Green Option	53	24.5%	75.5%

Hulme Walfield - 37/57 respondents support the scheme			
Maximum number of 37 responses per route option			
Option	Responses	Support %	Oppose %
Purple Option	34	38.2%	61.8%
Red Option	33	72.7%	27.3%
Blue Option	36	47.2%	52.8%
Green Option	30	56.7%	43.3%

Route Option results (combined)

Purple Option (analysis of parish support)			
Parish	Responses	Support %	Oppose %
Brereton	9	55.6%	44.4%
Congleton	585	82.2%	17.8%
Eaton	46	58.7%	41.3%
Hulme Walfield	34	38.2%	61.8%
Moreton cum Alcumlow	1	100.0%	0.0%
Newbold Astbury	3	33.3%	66.7%
North Rode	6	50.0%	50.0%
Somerford Booths	5	40.0%	60.0%
Somerford	22	40.9%	59.1%

Red Option (analysis of parish support)			
Parish	Responses	Support	Oppose
Brereton	10	80.0%	20.0%
Congleton	372	55.1%	44.9%
Eaton	59	81.4%	18.6%
Hulme Walfield	33	72.7%	27.3%
Moreton cum Alcumlow	1	100.0%	0.0%
Newbold Astbury	2	0.0%	100.0%
North Rode	7	42.9%	57.1%
Somerford Booths	3	100.0%	0.0%
Somerford	20	65.0%	35.0%

Blue Option (analysis of parish support)			
Parish	Responses	Support	Oppose
Brereton	8	50.0%	50.0%
Congleton	386	69.4%	30.6%
Eaton	50	24.0%	76.0%
Hulme Walfield	36	47.2%	52.8%
Moreton cum Alcumlow	0	0.0%	0.0%
Newbold Astbury	3	66.7%	33.3%
North Rode	7	28.6%	71.4%
Somerford Booths	3	0.0%	100.0%
Somerford	19	36.8%	63.2%

Green Option (analysis of parish support)			
Parish	Responses	Support	Oppose
Brereton	7	57.1%	42.9%
Congleton	352	57.1%	42.9%
Eaton	53	24.5%	75.5%
Hulme Walfield	30	56.7%	43.3%
Moreton cum Alcumlow	0	0.0%	0.0%
Newbold Astbury	2	100.0%	0.0%
North Rode	7	42.9%	57.1%
Somerford Booths	3	33.3%	66.7%
Somerford	16	25.0%	75.0%



Moreton cum Alcumlow - 4 respondents		
Option	Respondents	Respondent %
Support the scheme	2/4	50.0%
➤ In favour of only one option	2/4	50.0%
➤ In favour of two options	0/4	0.0%
➤ In favour of three options	0/4	0.0%
➤ In favour of all options	0/4	0.0%
Against the scheme	2/4	50.0%
Other	0/4	0.0%
Total	4/4	100.0%



2/4 (50.0%) respondents  
support the scheme

Moreton cum Alcumlow - 2/4 respondents support the scheme			
Maximum number of 2 responses per route option			
Option	Responses	Support %	Oppose %
Purple Option	1	100.0%	0.0%
Red Option	1	100.0%	0.0%
Blue Option	0	0.0%	0.0%
Green Option	0	0.0%	0.0%

Newbold Astbury - 15 respondents		
Option	Respondents	Respondent %
Support the scheme	3/15	20.0%
➤ In favour of only one option	1/15	6.7%
➤ In favour of two options	2/15	13.3%
➤ In favour of three options	0/15	0.0%
➤ In favour of all options	0/15	0.0%
Against the scheme	9/15	60.0%
Other	3/15	20.0%
Total	15/15	100.0%



3/15 (20.0%) respondents  
support the scheme

Newbold Astbury - 3/15 respondents support the scheme			
Maximum number of 3 responses per route option			
Option	Responses	Support %	Oppose %
Purple Option	3	33.3%	66.7%
Red Option	2	0.0%	100.0%
Blue Option	3	66.7%	33.3%
Green Option	2	100.0%	0.0%

North Rode - 7 respondents		
Option	Respondents	Respondent %
Support the scheme	7/7	100.0%
➤ In favour of only one option	3/7	42.9%
➤ In favour of two options	4/7	57.1%
➤ In favour of three options	0/7	0.0%
➤ In favour of all options	0/7	0.0%
Against the scheme	0/7	0.0%
Other	0/7	0.0%
Total	7/7	100.0%



7/7 (100.0%) respondents  
support the scheme

North Rode - 7/7 respondents support the scheme			
Maximum number of 7 responses per route option			
Option	Responses	Support %	Oppose %
Purple Option	6	50.0%	50.0%
Red Option	7	42.9%	57.1%
Blue Option	7	28.6%	71.4%
Green Option	7	42.9%	57.1%

Somerford Booths - 6 respondents		
Option	Respondents	Respondent %
Support the scheme	5/6	83.3%
➤ In favour of only one option	4/6	66.7%
➤ In favour of two options	1/6	16.7%
➤ In favour of three options	0/6	0.0%
➤ In favour of all options	0/6	0.0%
Against the scheme	1/6	16.7%
Other	0/6	0.0%
Total	6/6	100.0%



5/6 (83.3%) respondents  
support the scheme

Somerford Booths - 5/6 respondents support the scheme			
Maximum number of 5 responses per route option			
Option	Responses	Support %	Oppose %
Purple Option	5	40.0%	60.0%
Red Option	3	100.0%	0.0%
Blue Option	3	0.0%	100.0%
Green Option	3	33.3%	66.7%

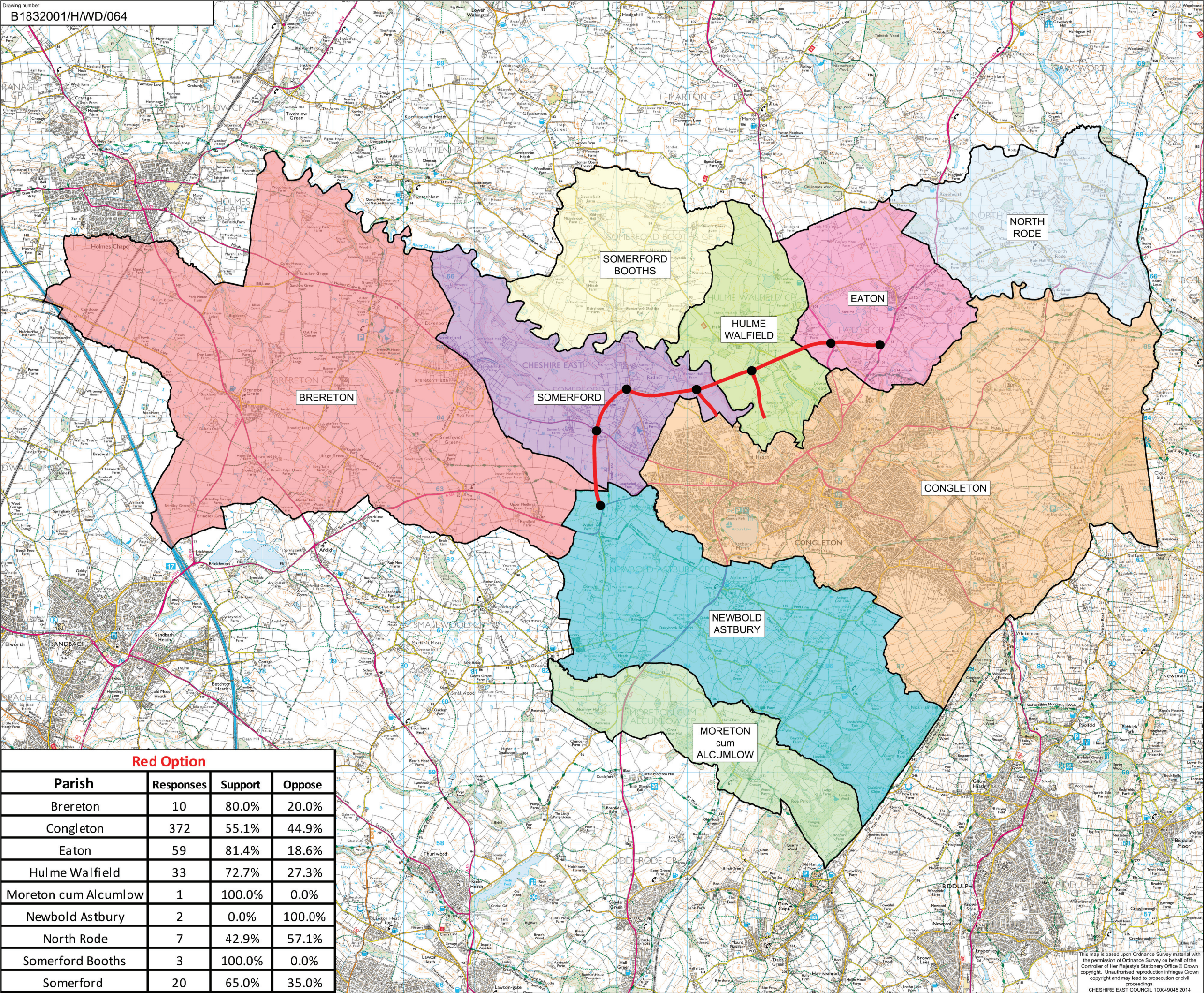
Somerford - 74 respondents		
Option	Respondents	Respondent %
Support the scheme	23/74	31.1%
➤ In favour of only one option	13/74	17.6%
➤ In favour of two options	10/74	13.5%
➤ In favour of three options	0/74	0.0%
➤ In favour of all options	0/74	0.0%
Against the scheme	47/74	63.5%
Other	4/74	5.4%
Total	74/74	100.0%



23/74 (31.1%)  
respondents support  
scheme

Somerford - 23/74 respondents support the scheme			
Maximum number of 23 responses per route option			
Option	Responses	Support %	Oppose %
Purple Option	22	40.9%	59.1%
Red Option	20	65.0%	35.0%
Blue Option	19	36.8%	63.2%
Green Option	16	25.0%	75.0%





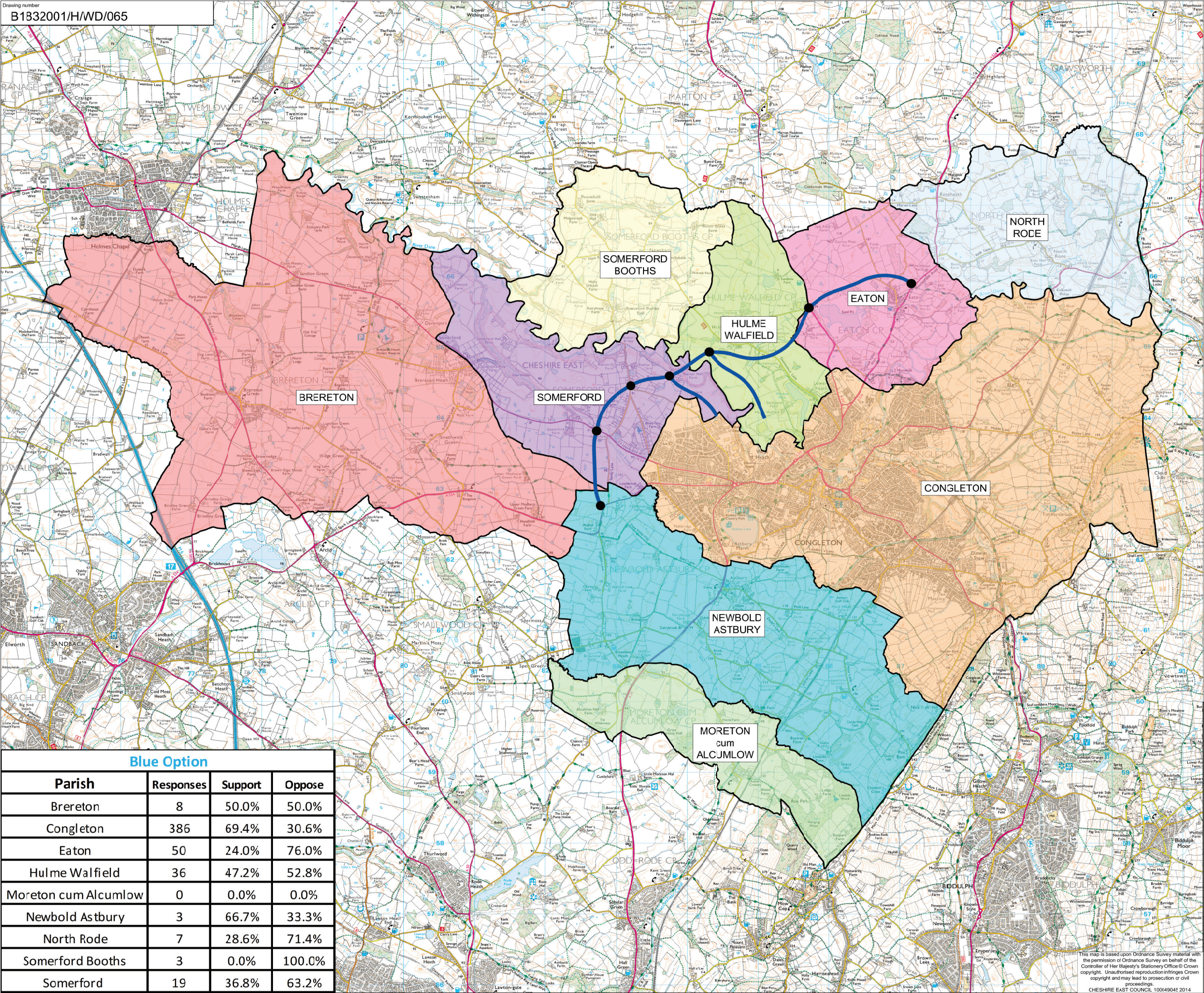
- NOTES:
- 1,083 total questionnaires received from within CW12 postcode boundary
  - Figures represent support and opposition for the red option based on feedback received from CW12 parishes during the public consultation.
  - 'Other' denotes instances where respondents selected 'No Preference', 'Don't Know' or failed to provide a response.
  - Red option displayed is indicative only - subject to change as alignment is developed.
  - CW12 parish boundaries taken from Ordnance Survey Mapping Information.

- KEY:
- Red Option
  - Parish Boundary
  - Roundabout

0	APR 14	FOR INFORMATION		PW	TS	LH	GW
Rev	Rev Date	Purpose of revision		Drawn	Checked	Rev'd	Approved
<div><div>JACOBS®</div><div>1 City Walk, Leeds, LS11 9DX Tel: +44(0)113 242 6771 Fax: +44(0)113 389 1389 www.jacobs.com</div></div>							
Client							
<div><div>Cheshire East Council</div></div>							
Project							
CONGLETON LINK ROAD							
Drawing title							
CW12 SPATIAL ANALYSIS RED OPTION							
Drawing status							
FOR INFORMATION							
Scale		25,000 @ A1			DO NOT SCALE		
Jacobs No.		B1832001					
Client no.							
Drawing number							Rev
B1832001/H/WD/064							0
This drawing is not to be used in whole or part other than for the intended purpose and project as defined on this drawing. Refer to the contract for full terms and conditions.							

This map is based upon Ordnance Survey material with the permission of Ordnance Survey on behalf of the Controller of Her Majesty's Stationery Office © Crown copyright. Unauthorised reproduction infringes Crown copyright and may lead to prosecution or civil proceedings.  
CHESHIRE EAST COUNCIL, 100649045 2014





Blue Option			
Parish	Responses	Support	Oppose
Brereton	8	50.0%	50.0%
Congleton	386	69.4%	30.6%
Eaton	50	24.0%	76.0%
Hulme Walfield	36	47.2%	52.8%
Moreton cum Alcumlow	0	0.0%	0.0%
Newbold Astbury	3	66.7%	33.3%
North Rode	7	28.6%	71.4%
Somerford Booths	3	0.0%	100.0%
Somerford	19	36.8%	63.2%

NOTES:

- 1,083 total questionnaires received from within CW12 postcode boundary
- Figures represent support and opposition for the blue option based on feedback received from CW12 parishes during the public consultation.
- 'Other' denotes instances where respondents selected 'No Preference', 'Don't Know' or failed to provide a response.
- Blue option displayed is indicative only - subject to change as alignment is developed.
- CW12 parish boundaries taken from Ordnance Survey Mapping Information.

KEY:

- Blue Option
- Parish Boundary
- Roundabout

0	APR 14	FOR INFORMATION	FW	TS	LH	GW
Rev	Rev Date	Purpose of revision	Drawn	Checked	Rev'd	Approved

**JACOBS**  
1 City Walk, Leeds, LS11 9DX  
Tel: +44(0)113 242 6771 Fax: +44(0)113 389 1389  
www.jacobs.com

Client  
**Cheshire East Council**

Project  
CONGLETON LINK ROAD

Drawing title  
CW12 SPATIAL ANALYSIS  
BLUE OPTION

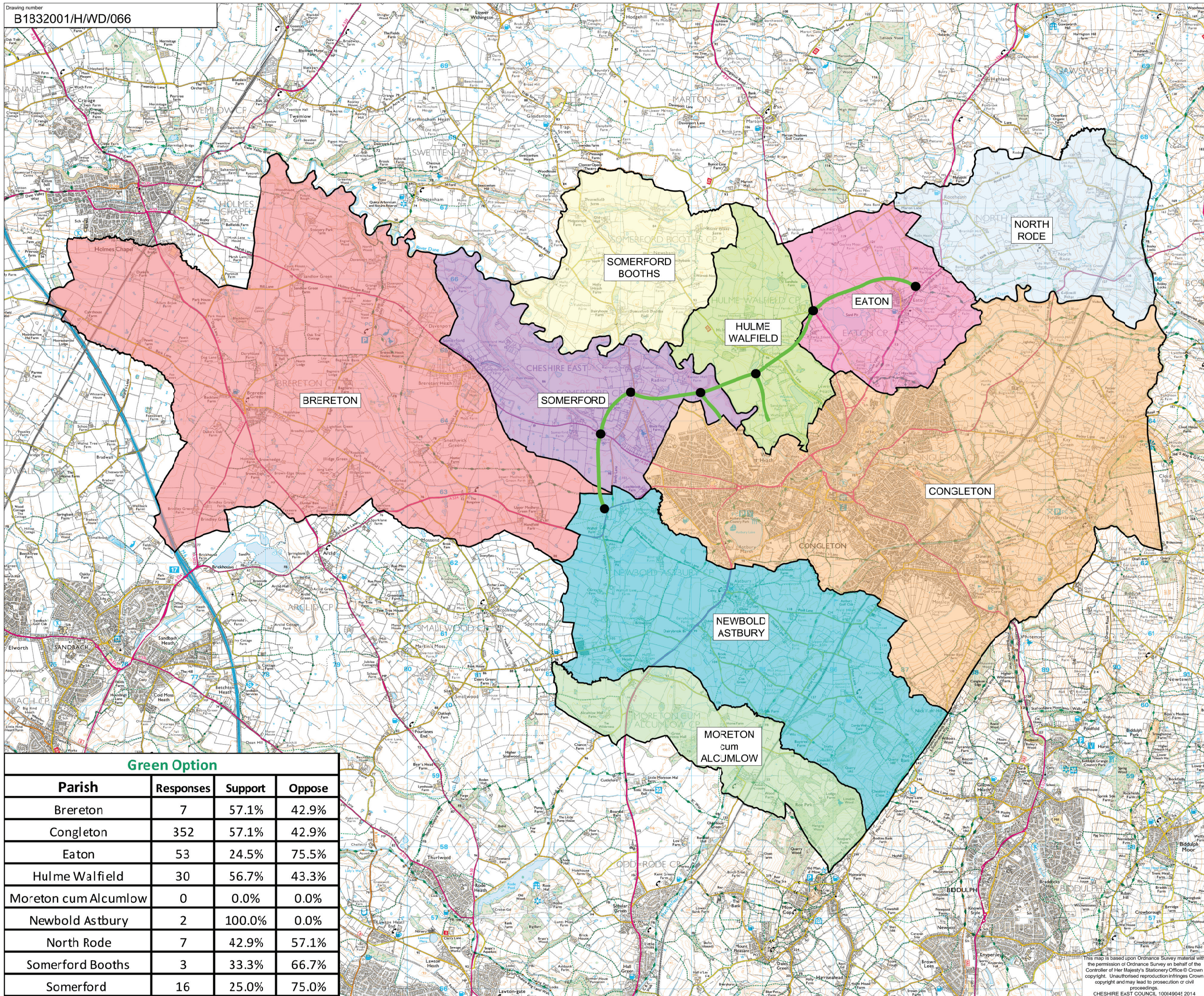
Drawing status  
FOR INFORMATION

Scale	25,000 @ A1	DO NOT SCALE
Jacobs No.	B1832001	
Client no.		
Drawing number	B1832001/H/WD/065	Rev 0

This drawing is not to be used in whole or part other than for the intended purpose and project as defined on this drawing. Refer to the contract for full terms and conditions.




This map is based upon Ordnance Survey material with the permission of Ordnance Survey on behalf of the Controller of Her Majesty's Stationery Office © Crown copyright. Unauthorised reproduction infringes Crown copyright and may lead to prosecution or civil proceedings.  
CHESHIRE EAST COUNCIL, 100649045 2014





- NOTES:**
- 1) 1,083 total questionnaires received from within CW12 postcode boundary
  - 2) Figures represent support and opposition for the green option based on feedback received from CW12 parishes during the public consultation.
  - 3) 'Other' denotes instances where respondents selected 'No Preference', 'Don't Know' or failed to provide a response.
  - 4) Green option displayed is indicative only - subject to change as alignment is developed.
  - 5) CW12 parish boundaries taken from Ordnance Survey Mapping Information.

KEY:

-  Green Option  
 Parish Boundary  
 Roundabout

0	APR 14	FORINFORMATION	PW	TS	LH	GW
Rev	Rev. Date	Purpose of revision	Dawn	Checkd	Rev'd	App

**JACOBS®**

1 City Walk, Leeds, LS11 9DX  
Tel: +44(0)113 242 6771 Fax: +44(0)113 389 13  
[www.jacobs.com](http://www.jacobs.com)



Project	CONGLETON LINK ROAD
---------	---------------------

Drawing title

CW12 SPATIAL ANALYSIS  
GREEN OPTION

Drawing status

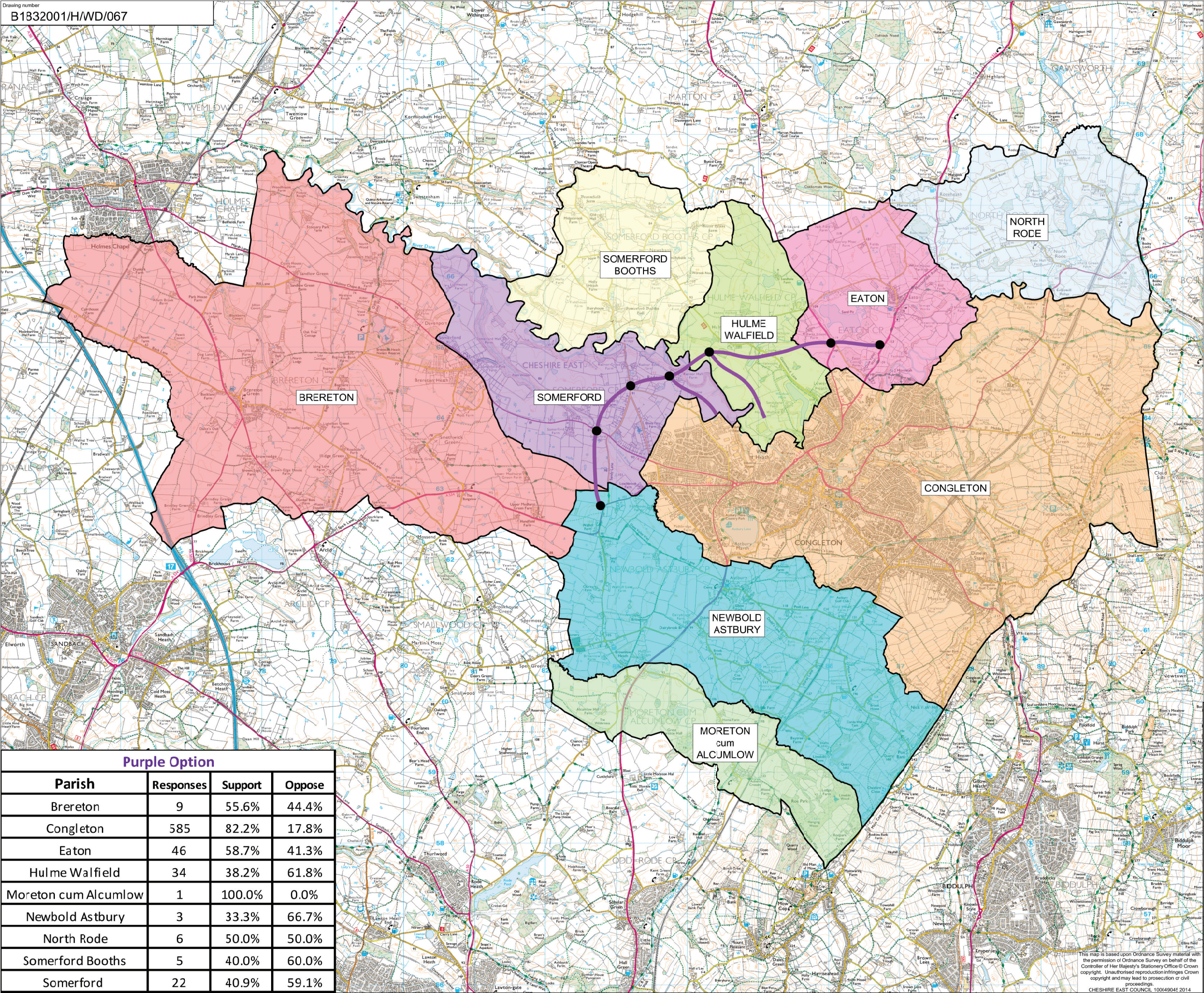
FOR INFORMATION

Scale	25,000 @ A1	DO NOT SCALE
Jacobs No.	B1832001	

Client no.		
Drawing number	B1832001/H/WD/066	Rev 0

This drawing is not to be used in whole or part other than for the intended purpose and project as defined on this drawing. Refer to the contract for full terms and conditions.





NOTES:

- 1,083 total questionnaires received from within CW12 postcode boundary
- Figures represent support and opposition for the purple option based on feedback received from CW12 parishes during the public consultation.
- 'Other' denotes instances where respondents selected 'No Preference', 'Don't Know' or failed to provide a response.
- Purple option displayed is indicative only - subject to change as alignment is developed.
- CW12 parish boundaries taken from Ordnance Survey Mapping Information.

KEY:

- Purple Option
- Parish Boundary
- Roundabout

Rev	Rev Date	Purpose of revision	Drawn	Checked	Rev'd	Appr'd
0	APR 14	FOR INFORMATION	PW	TS	LH	GW

Client: **JACOBS**  
1 City Walk, Leeds, LS11 9DX  
Tel: +44(0)113 242 6771 Fax: +44(0)113 389 1389  
www.jacobs.com

Project: **Cheshire East Council**  
CONGLETON LINK ROAD

Drawing title: **CW12 SPATIAL ANALYSIS PURPLE OPTION**

Drawing status: **FOR INFORMATION**

Scale	25,000 @ A1	DO NOT SCALE
Jacobs No.	B1832001	
Client no.		
Drawing number	B1832001/H/WD/067	Rev 0

This map is based upon Ordnance Survey material with the permission of Ordnance Survey on behalf of the Controller of Her Majesty's Stationery Office. Crown copyright. Unauthorised reproduction infringes Crown copyright and may lead to prosecution or civil proceedings.

CHESHIRE EAST COUNCIL, 100649045 2014



Congleton Link Road - breakdown of support for locations outside the CW12 boundary

- 1) A total of 187 (14.6% of the total response) questionnaires from outside the CW12 boundary.
- 2) 'Other' denotes instances where sporadic responses were received.
- 3) 'Breakdown of support/opposition for Route Options...' considers only the respondents who were in favour of the scheme.
- 4) % support and % opposition represent how the number of total responses received for an option are distributed in terms of support and opposition.

General Results

Crewe - 16 respondents		
Option	Respondents	Respondent %
Support the scheme	12/16	75.0%
➤ In favour of only one option	8/16	50.0%
➤ In favour of two options	3/16	18.8%
➤ In favour of three options	0/16	0.0%
➤ In favour of all options	1/16	6.2%
Against the scheme	3/16	18.8%
Other	1/16	16.2%
Total	16/16	100.0%

12/16 (75.0%)  
respondents support the  
scheme

Macclesfield - 26 respondents		
Option	Respondents	Respondent %
Support the scheme	23/26	88.5%
➤ In favour of only one option	19/26	73.1%
➤ In favour of two options	2/26	7.7%
➤ In favour of three options	0/26	0.0%
➤ In favour of all options	2/26	7.7%
Against the scheme	3/26	11.5%
Other	0/26	0.0%
Total	26/26	100.0%

23/26 (88.5%)  
respondents support the  
scheme

Manchester - 7 respondents		
Option	Respondents	Respondent %
Support the scheme	5/7	71.4%
➤ In favour of only one option	4/7	57.1%
➤ In favour of two options	1/7	14.3%
➤ In favour of three options	0/7	0.0%
➤ In favour of all options	0/7	0.0%
Against the scheme	2/7	28.6%
Other	0/7	0.0%
Total	7/7	100.0%

5/7 (71.4%) respondents  
support the scheme

Middlewich - 5 respondents		
Option	Respondents	Respondent %
Support the scheme	3/5	60.0%
➤ In favour of only one option	3/5	60.0%
➤ In favour of two options	0/5	0.0%
➤ In favour of three options	0/5	0.0%
➤ In favour of all options	0/5	0.0%
Against the scheme	2/5	40.0%
Other	0/5	0.0%
Total	5/5	100.0%

3/5 (60.0%) respondents  
support the scheme

Breakdown of support / opposition for Route Options

Crewe - 12/16 respondents support the scheme			
Maximum number of 12 responses per route option			
Option	Responses	Support %	Oppose %
Purple Option	11	72.7%	27.3%
Red Option	5	40.0%	60.0%
Blue Option	6	66.7%	33.3%
Green Option	5	80.0%	20.0%

Macclesfield - 23/26 respondents support the scheme			
Maximum number of 23 responses per route option			
Option	Responses	Support %	Oppose %
Purple Option	21	100.0%	0.0%
Red Option	4	100.0%	0.0%
Blue Option	4	75.0%	25.0%
Green Option	4	75.0%	25.0%

Manchester - 5/7 respondents support the scheme			
Maximum number of 5 responses per route option			
Option	Responses	Support %	Oppose %
Purple Option	4	100.0%	0.0%
Red Option	0	0.0%	0.0%
Blue Option	1	100.0%	0.0%
Green Option	1	100.0%	0.0%

Middlewich - 3/5 respondents support the scheme			
Maximum number of 37 responses per route option			
Option	Responses	Support %	Oppose %
Purple Option	3	100.0%	0.0%
Red Option	0	0.0%	0.0%
Blue Option	0	0.0%	0.0%
Green Option	0	0.0%	0.0%

Route Options results (combined)

Purple Option (analysis of support)			
Location	Responses	Support	Oppose
Crewe	11	72.7%	27.3%
Macclesfield	21	100.0%	0.0%
Manchester	4	100.0%	0.0%
Middlewich	3	100.0%	0.0%
Nantwich	3	100.0%	0.0%
Newcastle-under-Lyme	8	100.0%	0.0%
Sandbach	18	100.0%	0.0%
Stoke-on-Trent	60	96.7%	3.3%
Wilmslow	3	33.3%	66.7%
Other	22	95.5%	4.5%

Red Option (analysis of support)			
Location	Responses	Support	Oppose
Crewe	5	40.0%	60.0%
Macclesfield	4	100.0%	0.0%
Manchester	0	0.0%	0.0%
Middlewich	1	0.0%	100.0%
Nantwich	3	66.7%	33.3%
Newcastle-under-Lyme	0	0.0%	0.0%
Sandbach	10	50.0%	50.0%
Stoke-on-Trent	25	48.0%	52.0%
Wilmslow	3	66.7%	33.3%
Other	6	66.7%	33.3%

Blue Option (analysis of support)			
Location	Responses	Support	Oppose
Crewe	6	66.7%	33.3%
Macclesfield	4	75.0%	25.0%
Manchester	1	100.0%	0.0%
Middlewich	1	0.0%	100.0%
Nantwich	3	66.7%	33.3%
Newcastle-under-Lyme	0	0.0%	0.0%
Sandbach	10	40.0%	60.0%
Stoke-on-Trent	28	28.6%	71.4%
Wilmslow	2	50.0%	50.0%
Other	5	80.0%	20.0%

Green Option (analysis of support)			
Location	Responses	Support	Oppose
Crewe	5	80.0%	20.0%
Macclesfield	4	75.0%	25.0%
Manchester	1	100.0%	0.0%
Middlewich	1	0.0%	100.0%
Nantwich	3	66.7%	33.3%
Newcastle-under-Lyme	0	0.0%	0.0%
Sandbach	9	33.3%	66.7%
Stoke-on-Trent	28	25.0%	75.0%
Wilmslow	2	50.0%	50.0%
Other	5	80.0%	20.0%

Nantwich - 5 respondents		
Option	Respondents	Respondent %
Support the scheme	3/5	60.0%
➤ In favour of only one option	1/5	20.0%
➤ In favour of two options	0/5	0.0%
➤ In favour of three options	0/5	0.0%
➤ In favour of all options	2/5	40.0%
Against the scheme	2/5	40.0%
Other	0/5	0.0%
Total	5/5	100.0%



3/5 (60.0%) respondents  
support the scheme

Nantwich - 3/5 respondents support the scheme			
Maximum number of 3 responses per route option			
Option	Responses	Support %	Oppose %
Purple Option	3	100.0%	0.0%
Red Option	3	66.7%	33.3%
Blue Option	3	66.7%	33.3%
Green Option	3	66.7%	33.3%

Newcastle-under-Lyme - 8 respondents		
Option	Respondents	Respondent %
Support the scheme	8/8	100.0%
➤ In favour of only one option	8/8	100.0%
➤ In favour of two options	0/8	0.0%
➤ In favour of three options	0/8	0.0%
➤ In favour of all options	0/8	0.0%
Against the scheme	0/8	0.0%
Other	0/8	0.0%
Total	8/8	100.0%



8/8 (100.0%) respondents  
support the scheme

Newcastle-under-Lyme - 8/8 respondents support the scheme			
Maximum number of 8 responses per route option			
Option	Responses	Support %	Oppose %
Purple Option	8	100.0%	0.0%
Red Option	0	0.0%	0.0%
Blue Option	0	0.0%	0.0%
Green Option	0	0.0%	0.0%

Sandbach - 25 respondents		
Option	Respondents	Respondent %
Support the scheme	20/25	80.0%
➤ In favour of only one option	14/25	56.0%
➤ In favour of two options	4/25	16.0%
➤ In favour of three options	0/25	0.0%
➤ In favour of all options	2/25	8.0%
Against the scheme	3/25	12.0%
Other	2/25	8.0%
Total	25/25	100.0%



20/25 (80.0%)  
respondents support the  
scheme

Sandbach - 20/25 respondents support the scheme			
Maximum number of 20 responses per route option			
Option	Responses	Support %	Oppose %
Purple Option	18	100.0%	0.0%
Red Option	10	50.0%	50.0%
Blue Option	10	40.0%	60.0%
Green Option	9	33.3%	66.7%

Stoke-on-Trent - 65 respondents		
Option	Respondents	Respondent %
Support the scheme	61/65	93.8%
➤ In favour of only one option	47/65	72.3%
➤ In favour of two options	7/65	10.8%
➤ In favour of three options	4/65	6.2%
➤ In favour of all options	3/65	4.6%
Against the scheme	3/65	4.6%
Other	1/65	1.5%
Total	65/65	100.0%



61/65 (93.8%)  
respondents support the  
scheme

Stoke-on-Trent - 61/65 respondents support the scheme			
Maximum number of 61 responses per route option			
Option	Responses	Support %	Oppose %
Purple Option	60	96.7%	3.3%
Red Option	25	48.0%	52.0%
Blue Option	28	28.6%	71.4%
Green Option	28	25.0%	75.0%

Wilmslow - 6 respondents		
Option	Respondents	Respondent %
Support the scheme	4/6	66.7%
➤ In favour of only one option	3/6	50.0%
➤ In favour of two options	1/6	16.4%
➤ In favour of three options	0/6	0.0%
➤ In favour of all options	0/6	0.0%
Against the scheme	2/6	33.3%
Other	0/6	0.0%
Total	6/6	100.0%



4/6 (66.6%) respondents  
support the scheme

Wilmslow - 4/6 respondents support the scheme			
Maximum number of 4 responses per route option			
Option	Responses	Support %	Oppose %
Purple Option	3	33.3%	66.7%
Red Option	3	66.7%	33.3%
Blue Option	2	50.0%	50.0%
Green Option	2	50.0%	50.0%

Other - 24 respondents		
Option	Respondents	Respondent %
Support the scheme	22/24	91.7%
➤ In favour of only one option	17/24	70.8%
➤ In favour of two options	2/24	8.3%
➤ In favour of three options	0/24	0.0%
➤ In favour of all options	3/24	12.5%
Against the scheme	1/24	4.2%
Other	1/24	4.2%
Total	24/24	100.0%



22/24 (91.7%)  
respondents support the  
scheme

Other - 22/24 respondents support the scheme			
Maximum number of 22 responses per route option			
Option	Responses	Support %	Oppose %
Purple Option	22	95.5%	4.5%
Red Option	6	66.7%	33.3%
Blue Option	5	80.0%	20.0%
Green Option	5	80.0%	0.0%